



Tel:014039999

WINDOWS FOR NEW BUILD AND REPLACEMENT



Why compromise when you can have
Windows for Life?

VELFAC®





WHY COMPROMISE?

VELFAC offers uncompromised window solutions – windows which already meet the energy and safety demands of the future without sacrificing timeless and elegant design.

Whether for new build projects, or to replace existing windows, why compromise?



Extra Daylight?

VELFAC slim frames let extra light into your home – combine our contemporary style with your personal choice of opening function, window shape and glazing bars to meet your needs.

Save on Heating?

Save on heating with our energy efficient windows, supplied with low-energy glazing as standard.

Choices?

Mix and match hundreds of frame colours with a variety of handle functions and surface finishes. Choose between click vents or fully concealed electric openers to let in fresh air.

Why Paint?

Our composite wood/aluminium windows are practically maintenance free – so put aside the paint brush and enjoy life.

Security?

Feel safe at home. VELFAC windows are certified by Secured By Design, the flagship initiative to 'design out crime' from the Association of Chief Police Officers (ACPO).

Bespoke Service?

All VELFAC windows are tailor made, with specification details and design solutions provided free of charge.

Long Warranty?

We offer an extra long, 12-year warranty on our VELFAC 200 range and a life time expectancy of up to 50 years.





LET DAYLIGHT IN

How about a slim and elegant window design? VELFAC is characterised by narrow profiles which give your home an elegant look and let in more light.

VELFAC designer windows and doors combine beauty, strength and function with an unrivalled focus on detail. Our signature frame is both slim and elegant, a design which not only looks good but which also lets up to 50 per cent more natural light into your home than other windows on the market today. Our frame is also designed to deliver a uniform appearance, no matter whether a window is fixed or opening.

A style for every home

No matter what style your home may be, we have a window design to match. Stylish, clean and contemporary, ideal for modern houses, or classical – perfect for replacement projects, or for more traditional houses.

Both offer the same benefits – slim frame design, modern construction, and low energy performance, but in a window specifically tailored to complement your house.



Timeless, elegant and practical. With their narrow profiles VELFAC windows allow significantly more daylight into your home than conventional windows.

- Slim frames
- Up to 50% more daylight entering the interior
- Uniform appearance, regardless of opening function



**THE WOOD USED
IN VELFAC
PRODUCTS IS FSC
CERTIFIED, SOURCED
FROM NORTHERN
EUROPEAN FORESTS**

ENJOY LIFE – AND SAVE TIME AND MONEY

All it takes to maintain our windows is a bit of oil once a year! VELFAC aluminium/wood windows are virtually maintenance free, and have an expected lifetime of up to 50 years.

Our carefully crafted composite windows combine beautiful wood with hard wearing aluminium – the original VELFAC solution. Wood, a natural, sustainable and insulating material, is used to construct an interior frame which is protected by an external aluminium sash requiring little maintenance while still meeting the energy demands of the future.

- No need to paint
- A lifetime of up to 50 years
- Save time and money





MIX AND MATCH

Mix and match hundreds of frame colours with different handles and surface finishes. Choose between click vents or fully concealed electric openers to let in fresh air.

With VELFAC, you can choose the ideal colour for your new windows, and you can specify different colours for internal and exterior frames at no extra cost.

Make more of your windows

Use our accessories to make more of your windows. Fit a concealed integrated motor, for example, then programme your windows to open and close at set times to ensure fresh air circulates in your home – or opt for VELFAC click vents to improve ventilation.

- Full Range of RAL Colours
- Glossy or Mat
- Granite or Metallic



Choose from the extensive range of VELFAC accessories – including special locks, child-proof fittings, window stays, and handle styles – to adapt each window to your personal needs and to your individual style.

**VELFAC OFFERS A
12-YEAR WARRANTY ON
OUR VELFAC 200 RANGE**

THE FLEXIBLE WINDOW

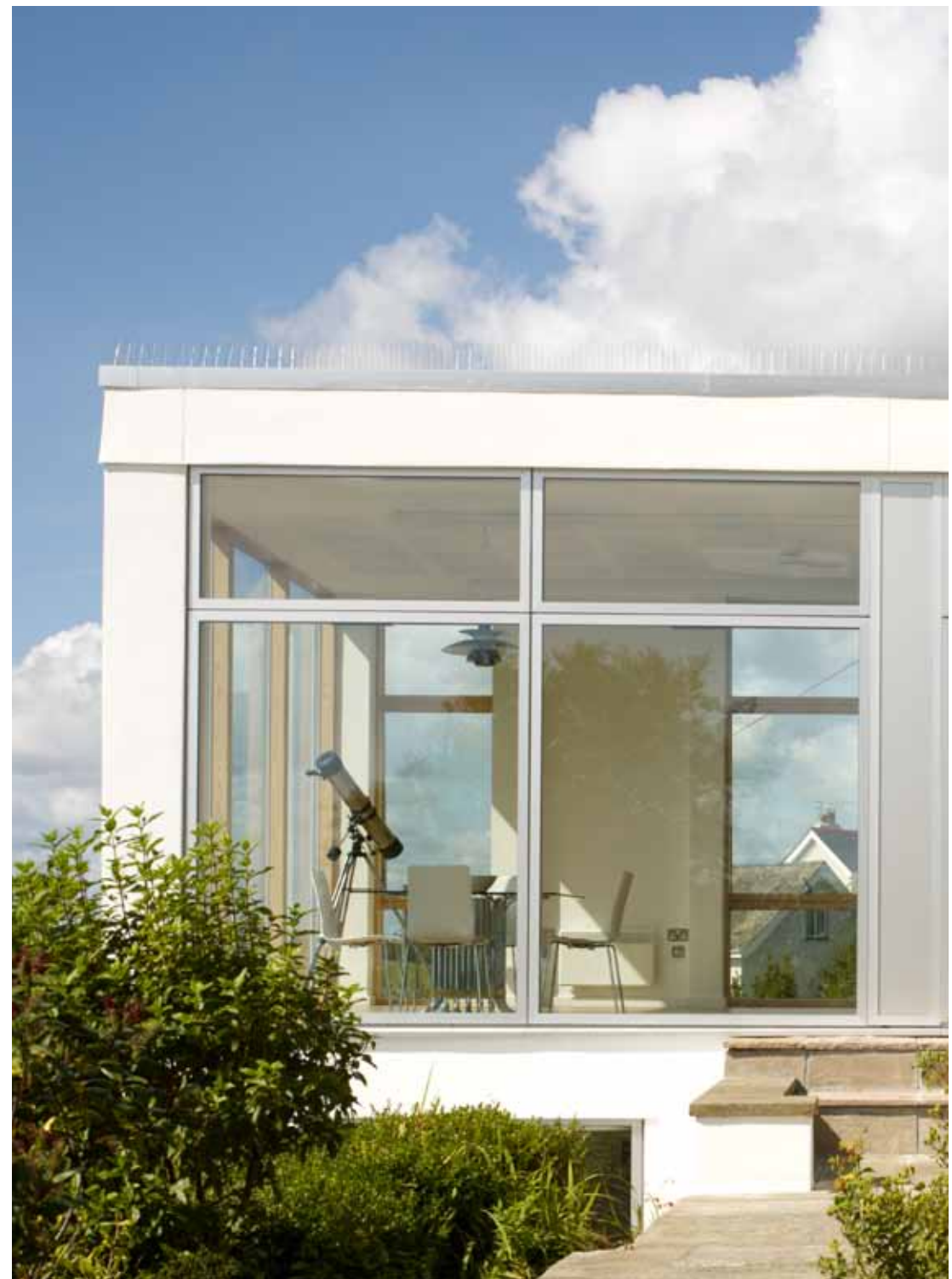
Inwards. Outwards. Or 180 degrees around... you can specify not only your window combinations, but also how you want them to open.



CONTEMPORARY VELFAC

The VELFAC 200 system is characterized by elegant clean lines, designed to complement contemporary architectural styles.

Windows and doors retain a uniform appearance, whether they open or not, further enhancing the uncluttered feel epitomized by current design. Not only will you experience more daylight in your home, your home will also have a timeless appearance that you can enjoy year after year.



USE THE ENERGY RIGHT

The VELFAC 200 system also features an energy optimising window, which represents the future of low energy windows. VELFAC 200 ENERGY offers unique insulation properties together with strength and durability in the original and contemporary VELFAC 200 design.

VELFAC 200 ENERGY is triple glazed making it energy optimised. You can easily combine it with the double glazed VELFAC 200 window system without any visible difference.



LET ENERGY IN – AND SAVE ON HEATING

VELFAC windows are specifically designed to generate more energy than they lose – reducing heating bills and CO₂ emissions.

Our most energy efficient composite windows meet the energy requirements of today and tomorrow by actively generating more energy within the home – in the form of light and heat – than they lose. Ideal for all types of houses, both low carbon and traditional, VELFAC energy efficient windows feature low-energy glass as standard, installed as either double or triple-glazing.

Our windows can reduce your heating needs while also helping maintain a better indoor climate, saving potentially hundreds of pounds in energy bills.

■ Elegant slim frame profiles also let in extra energy



- Reduce your energy bills
- Shrink the carbon footprint of your house
- Improve indoor climate and quality of life

DOUBLE OR
TRIPLE LOW-
ENERGY GLAZING
IS STANDARD
WITH VELFAC

CUTTING EDGE

Without compromising the design of our original, modern style VELFAC 200 series, we have developed a new window with a positive energy balance that meets future energy requirements with U_w -values as low as 0.8. Energy-wise, this new system, called VELFAC 200 ENERGY is at the cutting edge.



■ Get a clear view of the world: VELFAC 200 series sliding patio door



FEEL SAFE AT HOME

VELFAC windows are certified by Secured by Design, the flagship initiative to 'design out crime' from the Association of Chief Police Officers (ACPO).

To gain Secured by Design accreditation, VELFAC windows have met stringent security standards with the result that VELFAC products have been awarded 'Police Preferred Specification' status. For example, VELFAC window construction reduces the risk of forced entry by placing glazing beads on the inside, with the result that glass cannot be removed from the outside.

- ▶ 'Police Preferred Specification' status
- ▶ Feel safe in your own home
- ▶ Reduce the risk of forced entry

VELFAC AND VELUX WINDOWS FOR YOUR ENTIRE HOME

Sister companies VELUX and VELFAC provide window solutions for the entire house – from wall to roof.

VELUX and VELFAC supply their complementary ranges of high-quality windows to customers across the globe. Both are subsidiaries of VKR Holding, the worldwide group of companies dedicated to the supply of products and materials designed to bring daylight, fresh air and a better environment into people's everyday life.

Together, VELUX and VELFAC design and manufacture an extensive selection of stylish, high quality products which can transform both contemporary and traditional homes.

Roof solutions from VELUX and windows from VELFAC combine to bring light and energy into the home, while the wide variety of shapes, sizes and styles available complement and enhance the beauty of any building.





SLIM FRAME | GOOD ENERGY

LOOKING FOR NEW WINDOWS?

Contact us for a no obligation quote:



info@teroco.ie



014039999

WHY COMPROMISE?

All in one – three easy steps to new windows

1 Ask for free guidance and a no-obligation quote

We are always ready to answer your questions and suggest solutions.

2 Production to suit you

VELFAC windows are tailor made, with each window produced specifically for your home.

3 Installation

Use one of our specially trained Approved Joiners to ensure a successful installation.