

VELFAC[®]

CERTIFIED PARTNER



TEROCO / VELFAC

The VELFAC Edge Window System

TEROCO[®]
WINDOWS & DOORS



WEATHER-RESISTANT ALUMINIUM ON THE OUTSIDE



NATURAL WOOD ON THE INSIDE



REVERSIBLE WINDOWS ALLOW CLEANING FROM INSIDE



SHAPED WINDOW OPTION





VELFAC EDGE

THE EDGY WINDOW SYSTEM



VELFAC EDGE - OVERVIEW

CHARACTERISTICS

Minimalistic edge design - stylish and sophisticated

Uniform sightlines regardless of opening function

Market leading warranty of 12 years

Uw values down to 1.3 W/m²K

Available as 32mm double layer glazing



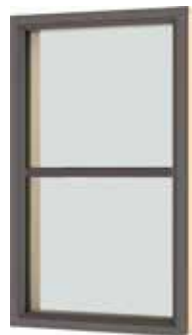
New product range with +30 years experience

SASH VARIATIONS



VELFAC Edge
32mm double glazed unit

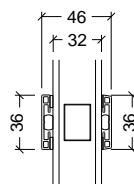
GLAZING BARS AND WINDOWS



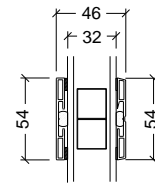
36mm



54mm



36mm energy glazing bar



54mm energy glazing bar

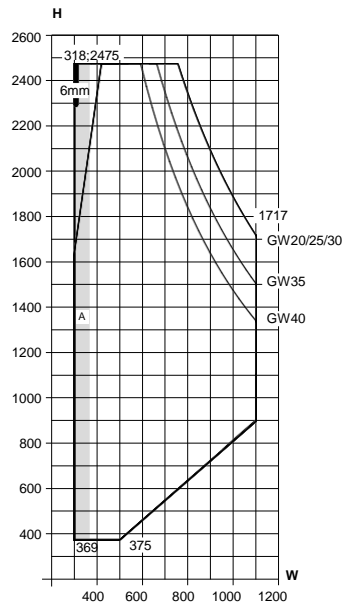
VELFAC EDGE - OPENING FUNCTIONS

SIDEHUNG WINDOW



- The sash opens up to 90°
- Concealed hinges
- An adjustable friction brake allows random opening position
- The espagnolette has a built-in ventilation position
- Available as 2-leaf with French casement mullion

Min./max. sizes



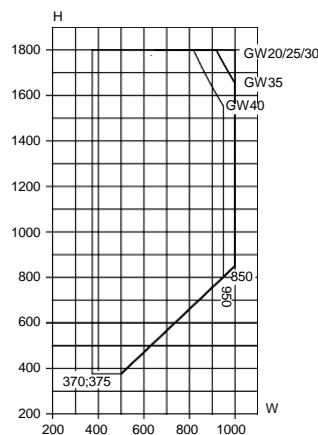
GW = glass weight (see page 14)
A = with circular catch handle

SIDE-GUIDED WINDOW



- To open, the sash moves on guide rails mounted on the head and cill
- The sash stops at approx. 90°
- When fully opened, a 15cm (minimum) gap allows cleaning from the inside
- The espagnolette has a built-in ventilation position
- An adjustable friction brake allows random opening position
- Available as 2-leaf with French casement mullion

Min./max. sizes



When fully opened, a gap allows external cleaning from the inside.

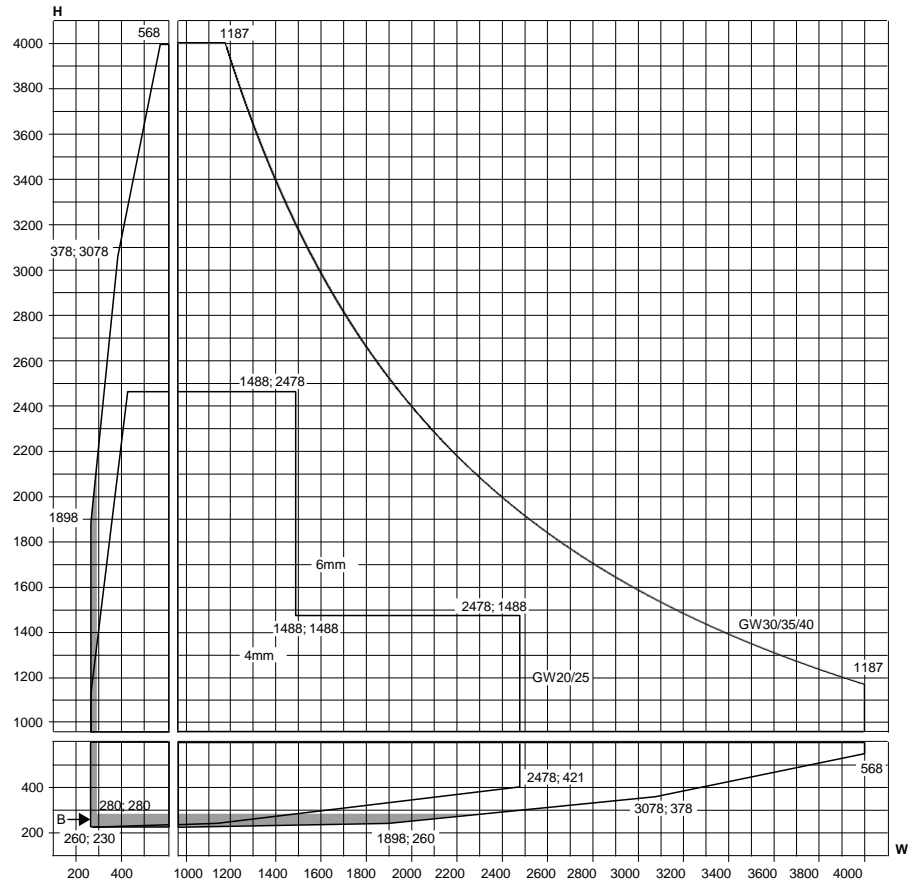
VELFAC EDGE - OPENING FUNCTIONS

FIXED CASEMENT



- The frame and sash are integrated
- Appears identical to all VELFAC Edge window types

Min./max. sizes

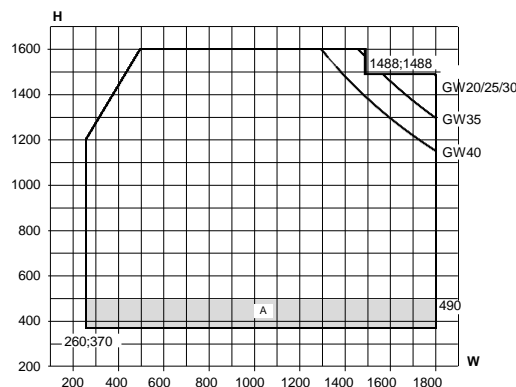


TOP-GUIDED WINDOW



- When opened the sash provides a ventilation gap at the head
- The espagnolette has a built-in ventilation position
- The balance arms have built-in adjustable friction brakes allowing random opening position

Min./max. sizes



GW = glass weight (see page 14)
 A = With circular catch handle and friction brake
 B = elements with multiple sashes only

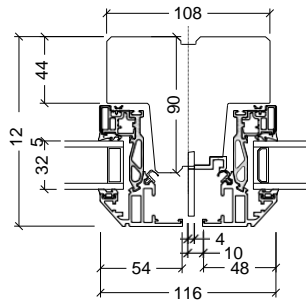
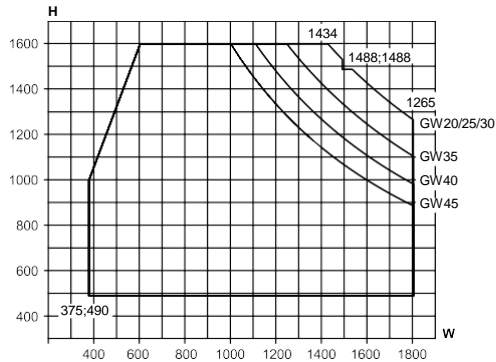
VELFAC EDGE - OPENING FUNCTIONS

TOPHUNG FULLY REVERSIBLE WINDOW - WITH NO OVERSAIL - WITH 48MM SIGHTLINES

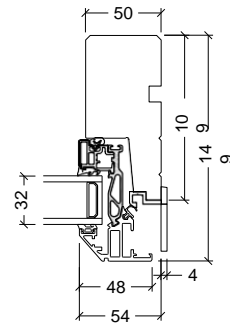


- The sash can be rotated by up to 170° to allow cleaning from the inside
- A safety restrictor is triggered when the window is opened approx. 5cm
- The window can be reversed to the cleaning position where an automatic catch keeps the window in place
- The espagnolette has a built-in ventilation position
- No oversail
- Rotating arms mean 48mm jamb sightline
- Due to the rotating arms a sealing of minimum 10mm is required

Min./max. sizes



Mullion with uniform sightline window to the left and tophung fully reversible window with slightly different sightlines to the right



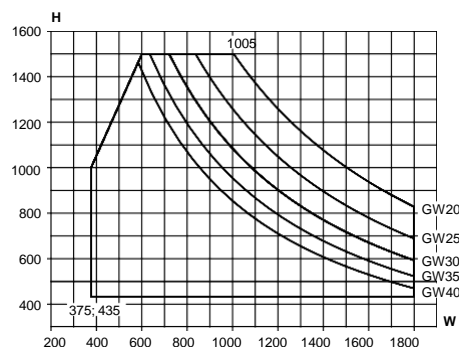
Jamb. NB. the sash is 4mm slimmer in both sides than the standard sash

TOPHUNG FULLY REVERSIBLE WINDOW - UNIFORM SIGHTLINES



- The sash can be rotated by up to 170° to allow cleaning from the inside
- A safety restrictor is triggered when the window is opened approx. 5cm
- The window can be reversed to the cleaning position where an automatic catch keeps the window in place
- The espagnolette has a built-in ventilation position
- Max. setback 100mm to avoid oversail clash

Min./max. sizes



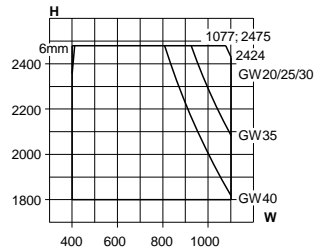
GW = glass weight (see page 14)

VELFAC EDGE - OPENING FUNCTIONS

CASEMENT DOOR, 1-LEAF



Min./max. sizes



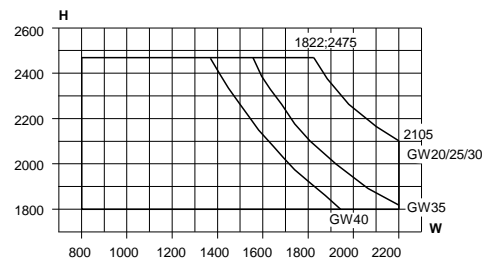
- The sash opens up to 90°
- Concealed hinges
- An adjustable friction brake allows random opening position
- Can be supplied to allow 180° opening but is then not fitted with friction arm
- The espagnolette has a built-in ventilation position
- Supplied with 15mm or 52mm threshold

GW = glass weight
(see page 14)

CASEMENT DOOR, 2-LEAF



Min./max. sizes



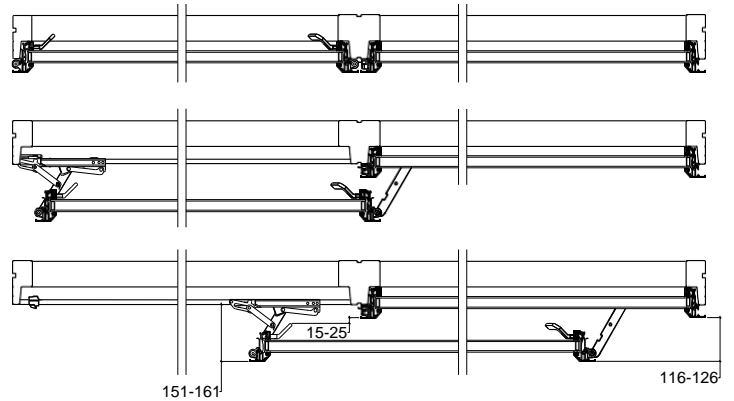
- Please refer to Casement door, 1-leaf for information
- Freeing the flushbolt in the French casement mullion allows the slave door to be opened

VELFAC EDGE - OPENING FUNCTIONS

SLIDING CASEMENT DOOR WITH 70MM THRESHOLD, 1-LEAF



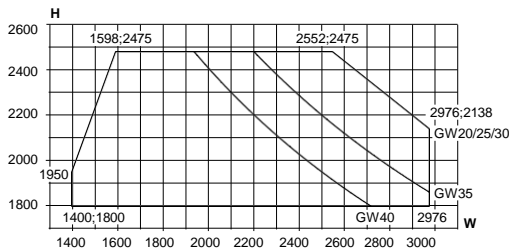
- The sliding door provides up to 1.2m free opening
- The frame profile of the door matches that of the VELFAC Edge window series
- When opened, the master door moves outwards from the frame, and then slides across the adjacent fixed sash (116-126mm out)
- 70mm threshold with alu-treadplate



How to open the sliding casement door

Min./max. sizes

Complete unit (symmetric)



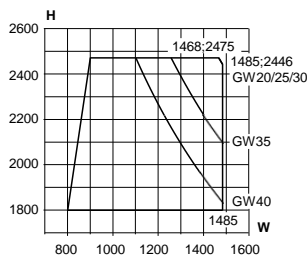
GW = glass weight
(see page 14)

Asymmetric sashes

All asymmetric sashes and large symmetric sashes will be supplied separately and must be fixed on site.

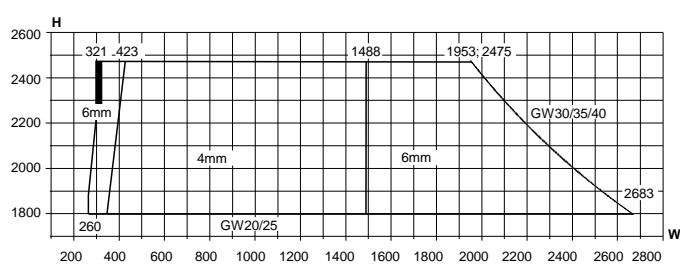
Min./max. sizes

Opening sash



Min./max. sizes

Fixed sash



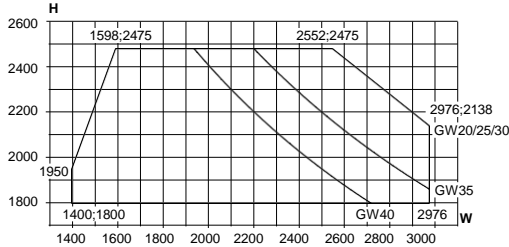
VELFAC EDGE - OPENING FUNCTIONS

SLIDING CASEMENT DOOR WITH 70MM THRESHOLD, 2-LEAF

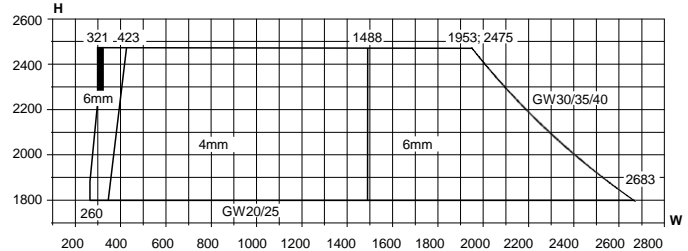


- The sliding door provides up to 2.5m free opening
- The frame profile of the door matches that of the VELFAC Edge window series
- When opened, the master doors move outwards from the frame, and then slide across the adjacent fixed sashes (116-126mm out)
- 70mm threshold with alu-treadplate
- The slave leaf will be opened by freeing the espagnolette handle and the flushbolt in the mullion

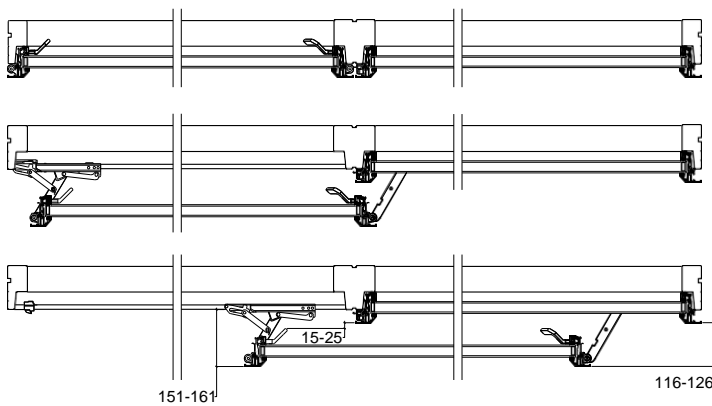
Min./max. sizes
The opening sashes together



Min./max. sizes
The fixed sashes per sash



The opening sashes element and the fixed elements will be supplied separately and must be fixed on site.

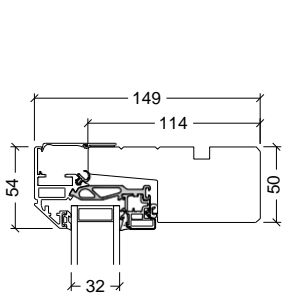


How to open the sliding casement door
(shown here as 1-leaf)

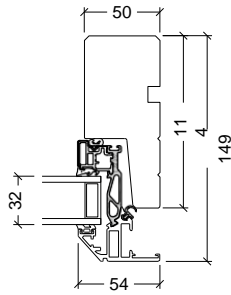
GW = glass weight
(see page 14)

VELFAC EDGE - FRAMES, MULLIONS & TRANSOMS

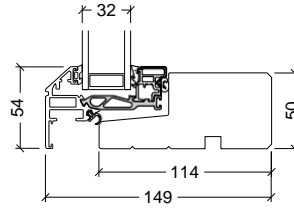
FRAMES



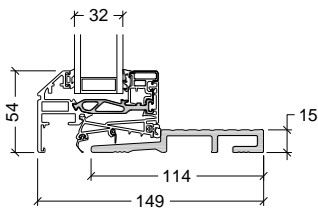
Head



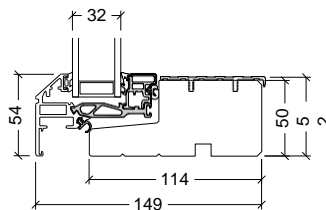
Jamb



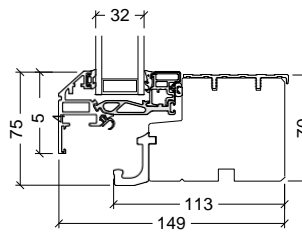
Cill



15mm threshold, casement door

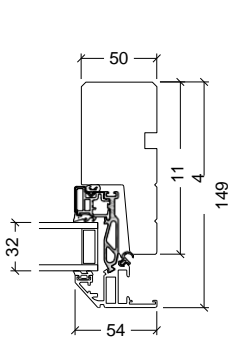


52mm threshold, casement door

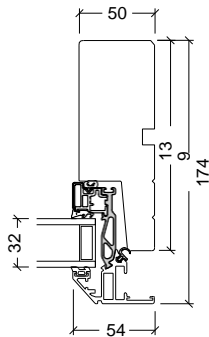


Threshold, sliding casement door

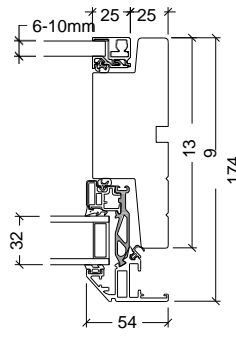
FRAME VARIATIONS



114mm frame

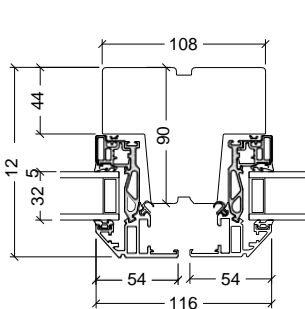


139mm frame

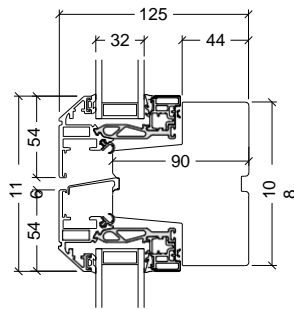


139mm frame with internal sash

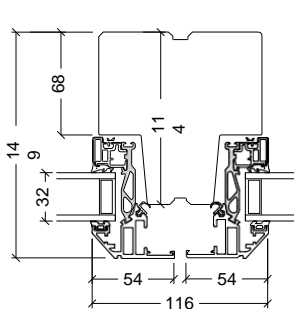
MULLIONS AND TRANSOMS



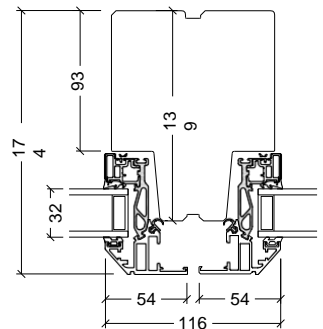
90mm mullion (windows only)



90mm transom



114mm mullion (transom)



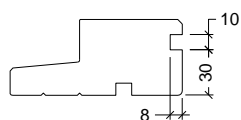
139mm mullion (transom)

MULLION AND TRANSOM VARIATIONS

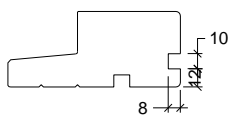
VELFAC EDGE - FRAME OPTIONS + HANDLES

VELFAC EDGE - GROOVES, REBATES AND FRAME EXTENSION PACKERS

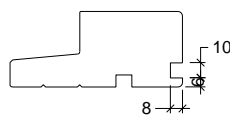
Please note that the grooves, rebates and packers are shown in 114mm, but are also available with 139mm frame.



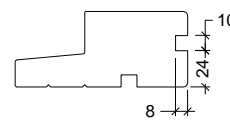
Groove type 30-10-8



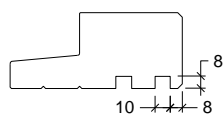
Groove type 12-10-8



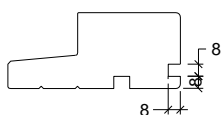
Groove type 6-10-8



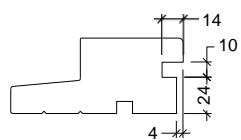
Groove type 24-10-8



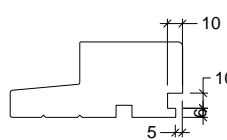
Groove type 10-8-8 E



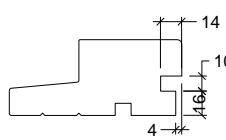
Groove type 8-8-8



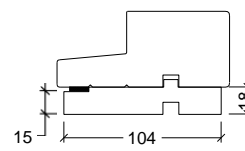
Cill groove type
24x10x14/4



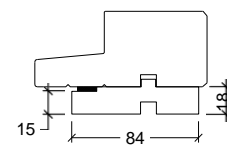
Cill groove type
6x10x10/5



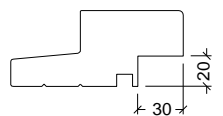
Cill groove type
16x10x14/4



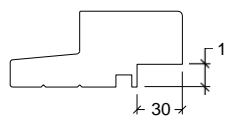
Packer type 18x104



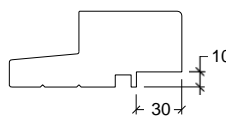
Packer type 18x84
Also available for sliding
casement doors



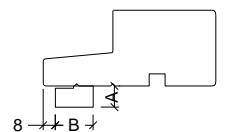
Rebate type 20x30



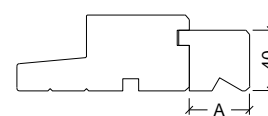
Rebate type 15x30



Rebate type 10x30



Packer type 14x25 (Ax B)
Packer type 20x35 (Ax B)



Packer type D40x40 (A)
Packer type D40x60 (A)

HANDLES



Espagnolette. Standard in all open functions.



Espagnolette with lock. Supplied with lock and key for extra security.



Espagnolette with child-lock. Supplied with child-lock button.



Espagnolette for cylinder lock. Supplied with or without lock and key.



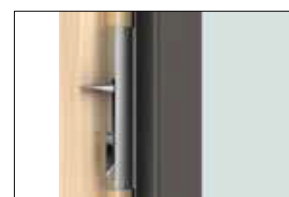
Ventilation position. The striking plate allows a 5mm night ventilation opening for all espagnolette handles.



VELFAC Maxi-Handle for all espagnolette handles. Due to its shape and rough surface, the handle is easier to use, e.g. for elderly people. Supplied separately.



External handle for casement and sliding casement door. Supplied separately.



Flushbolt for operation of the French casement mullion in 2-leaf elements.

VELFAC EDGE - FITTINGS + ACCESSORIES

SECURITY FITTINGS AND ACCESSORIES



External stay for casement doors.



PN fitting. Makes forced entry more difficult.



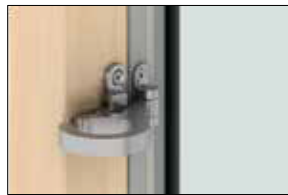
Friction brake. Standard in sidehung, side- and top-guided windows and casement doors.



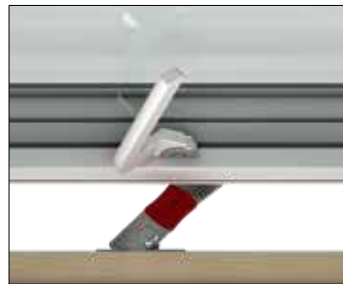
180° hinge for casement doors. Not available in combination with friction brake.



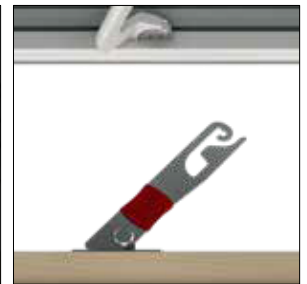
Lockable restrictor. Not available for sliding casement doors. Length: 160mm and 270mm.



Circular catch handle ensures wind and water tightness for tall topguided and reversible windows.



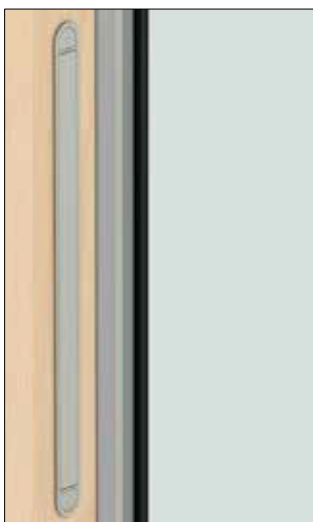
Standard restrictor w/ventilation position lock. Not available for sliding casement door.



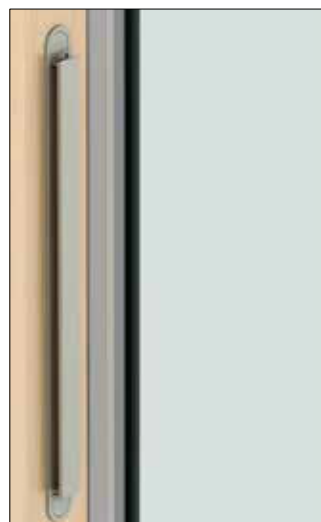
Lockable restrictor. Not available for sliding casement door.



Electric opener for remote operation for windows. Can be computer controlled for fully naturally ventilated projects. Fully concealed in the frame. Three chain lengths offering 60mm, 210mm and 440mm clear opening.



Click vent. Anodized surface finish. Fully concealed. Free ventilation opening: 3000mm². For the equivalent free opening, please refer to our website.



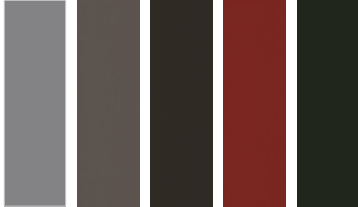
Acoustic trickle vent. The vent is machined into a timber packer with an external aluminium profile in the same colour as the window sashes. Documentation on air flow can be requested. Achieves a sound reduction value of Dn,e,w 40 dB.

VELFAC EDGE - COLOURS AND GLAZING

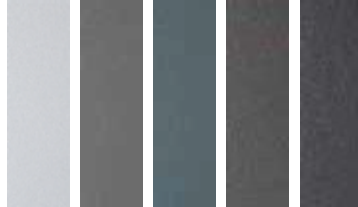
COLOURS

External colours and surface finishes

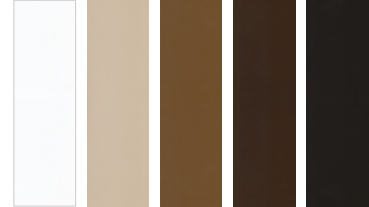
The external aluminium sashes are surface treated in a hard-wearing Polyester-powder coating available in a wide range of RAL colours, VELFAC Granite, metallic finish in RAL 9006 & 9007, or anodised silver or bronze.



All classic RAL-colours



VELFAC Granite



Anodised

Internal colours and surface finishes

The wood frames are treated with a clear lacquer to enhance the warmth of the natural grain, or painted in one of a range of RAL colours to match the interior decor.



Popular internal surface finishes



Internal VELFAC Edge glazing beads

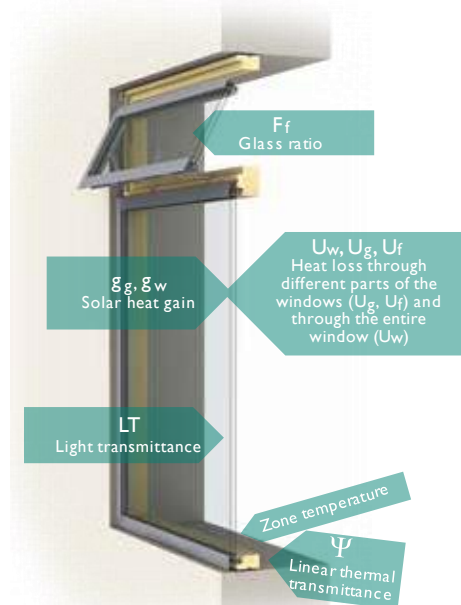


CALCULATION OF GLASS WEIGHT

All window glass, including any laminating material, has a weight of 2.5 kg per square metre, per millimetre thickness. The weight of the spacer profile is unimportant and therefore not measured.

Glazing	Calculation of glass weight (GW)		
4-24-4	= (4+4) x 2.5 kg	= 20 kg/m ²	= GW 20
6-22-4	= (6+4) x 2.5 kg	= 25 kg/m ²	= GW 25
3/0.38/3-22-4	= (6+4) x 2.5 kg	= 25 kg/m ²	= GW 25
6-20-6	= (6+6) x 2.5 kg	= 30 kg/m ²	= GW 30
8-16-4/0.38/4	= (8+8) x 2.5 kg	= 40 kg/m ²	= GW 40

WINDOW TERMINOLOGY





Secured by Design



Official Police Security Initiative



The Wood Window Alliance



The mark of responsible forestry
FSC® C101947

Please ask for our FSC-certified products.



TEROCO Windows & Doors

Dublin Office:

Unit B1

Riverview Business Park

Nagor Road

Dublin 12

D12 T227

Tel: +353 1 403 9999

Cork Office:

Unit 16 Eastgate Drive

Eastgate Business Park

Little Island

Co. Cork

T45 T623

Tel: +353 21 206 6699

E: info@TEROCO.ie

W: www.TEROCO.ie



CERTIFIED PARTNER

DESIGN WITH CONFIDENCE

03.506-02.20 © 2015, 2020 VELFAC LTD ® VELFAC and VELFAC logo are registered trademarks used under license by VELFAC Group. This brochure and its contents are subject to our General Conditions of Sale. The information contained in this catalogue is correct at time of print. However, due to our commitment for continuous product improvements, some of these details may change without notice. All rights of changing the product mix without notice reserved.